

# Louise Hooper Landscape Architect

## Private houses in AONB, paragraph 55 houses

### Paragraph 55 house, Dover, Kent

A small, modest-sized house in the grounds of a Grade II listed manor, close to a 13th century parish church, within the Kent Downs AONB. The LVIA undertaken by **LHLA** concludes that 'the proposed new development...will significantly enhance its setting...giving rise to a sensitive scheme which will clearly benefit its immediate surroundings'. The building by Charles Holland Architect includes a sloping cat-slide roof and Kentish peg-tiles. The garden design includes a Kentish orchard, pleached lime walk, a formal garden with herbaceous perennials and grasses, a winter garden with berries and evergreens, bosques of medlar and quince to frame the garage. Awaiting decision from LPA.

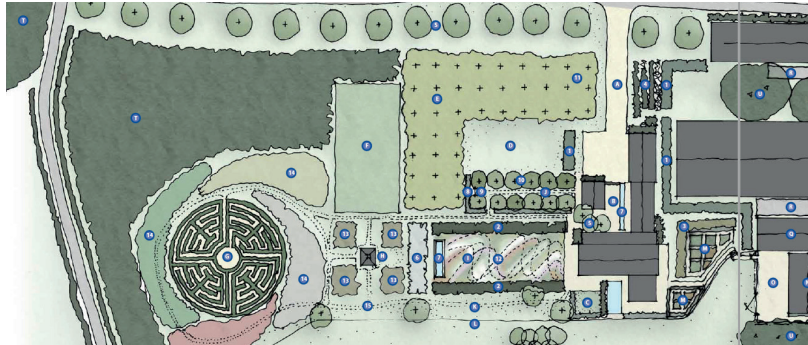
### Old Rectory, Lower Hardres, Canterbury, Kent.

Grade II listed former rectory in Conservation Area and Kent Downs AONB. Working with Panter Hudspith Architects, **LHLA** prepared a LVIA for the solar array, and a landscape design for the large sloping garden full of mature trees. Proposals included a large conservatory extension, complete refurbishment of the rectory, large 4 bay garage and workshop, a 33 metre long outdoor lap pool, stone terraces and steps. Planning granted in 2016.

**Old Lodge Farm, Moons Lane, Dormansland, Surrey**  
This site was a former Qatari-owned stud for Arab horses. Proposals include a new equestrian business and replacement dwelling by Hawkes Architecture within the High Weald AONB. Working with Studio Engleback, we prepared a LVIA and a Landscape Design for the whole site, restoring the damaged landscape fabric through extensive inter-linked woodland planting. Application went to appeal and approval was granted. Currently working on detail design.



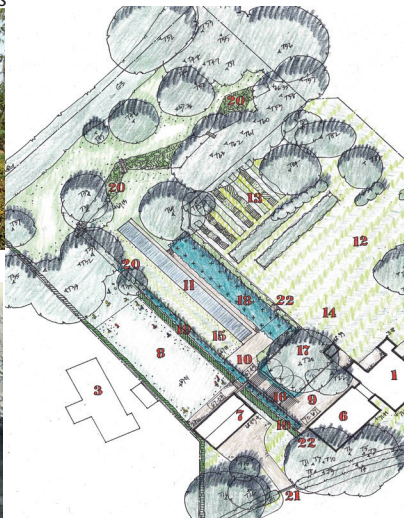
Images for paragraph 55 house showing Kentish orchard, flint wall and herbaceous perennials



Garden design for Old Lodge Farm with a natural pool, ha-ha, hilltop labyrinth, orchard, nut-tree, meadow walk, summer and kitchen gardens



Old Rectory, Lower Hardres, Canterbury



Old Rectory garden and solar array



Charles Holland Architect photomontage



Garden design for paragraph 55 house with a pleached lime walk, Kentish orchard, medlar and quince bosques and kitchen garden



Images for drive and entrance court at Old Lodge Farm



Images for pool and arbour at Old Rectory

**LHLA**

Louise Hooper Landscape Architect

a: Latterhams Penshurst Tonbridge Kent t: 01892 870211 m: 07711820575 e: lhla@btinternet.com

w: <http://www.louisehooper.co.uk> <https://www.facebook.com/louisehooperlandscapearchitect/>

Landscape  
Institute  
Registered  
Practice